

# SOAMES



16/139 Jersey Street North ASQUITH NSW

2  2  1 

This 2 bedroom apartment is on level 3 in a secure and convenient building "The Symphony", which offers easy care and the convenient lifestyle, designed by award winning Zhinar Architects.

Located in the sought after Hornsby North Public School catchment, good for young families and would be easy to lease.

Just 250m away from Asquith Train Station and Coles; short stroll to a selection of shops, cafes, parks, bowling club and the local golf course; your apartment is also just moments from Hornsby CBD, Westfield shopping/restaurant precinct, a selection of prestigious North Shore schools, Bobbin Head Marina and easy access to the M1, M2 and M7 Freeways.

Features:

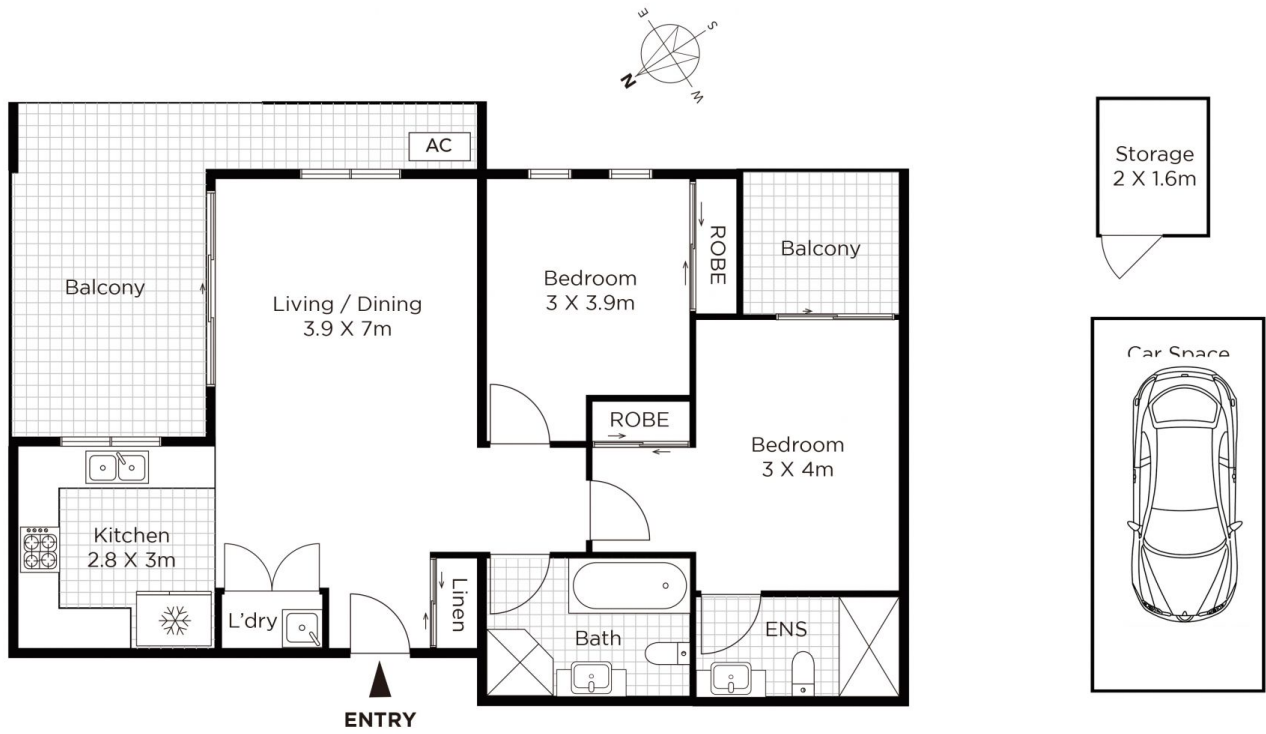
- All windows and two balconies with private outlook, East

**Building Size** : 111 sqm

**View** : <https://www.soames.com/sale/nsw/north-shore-upper/asquith/residential/apartment/6807447>



**Geraldine (Xiao-Bin) Wang**  
02 9987 0011



**16 / 139 Jersey St, Asquith NSW 2077**

**Disclaimer**

Floor Plan measurements are approximate and are for illustrative purposes only. While we cannot doubt the floor plans accuracy, we make no guarantee, warranty or representation as to the accuracy and completeness of the plan.